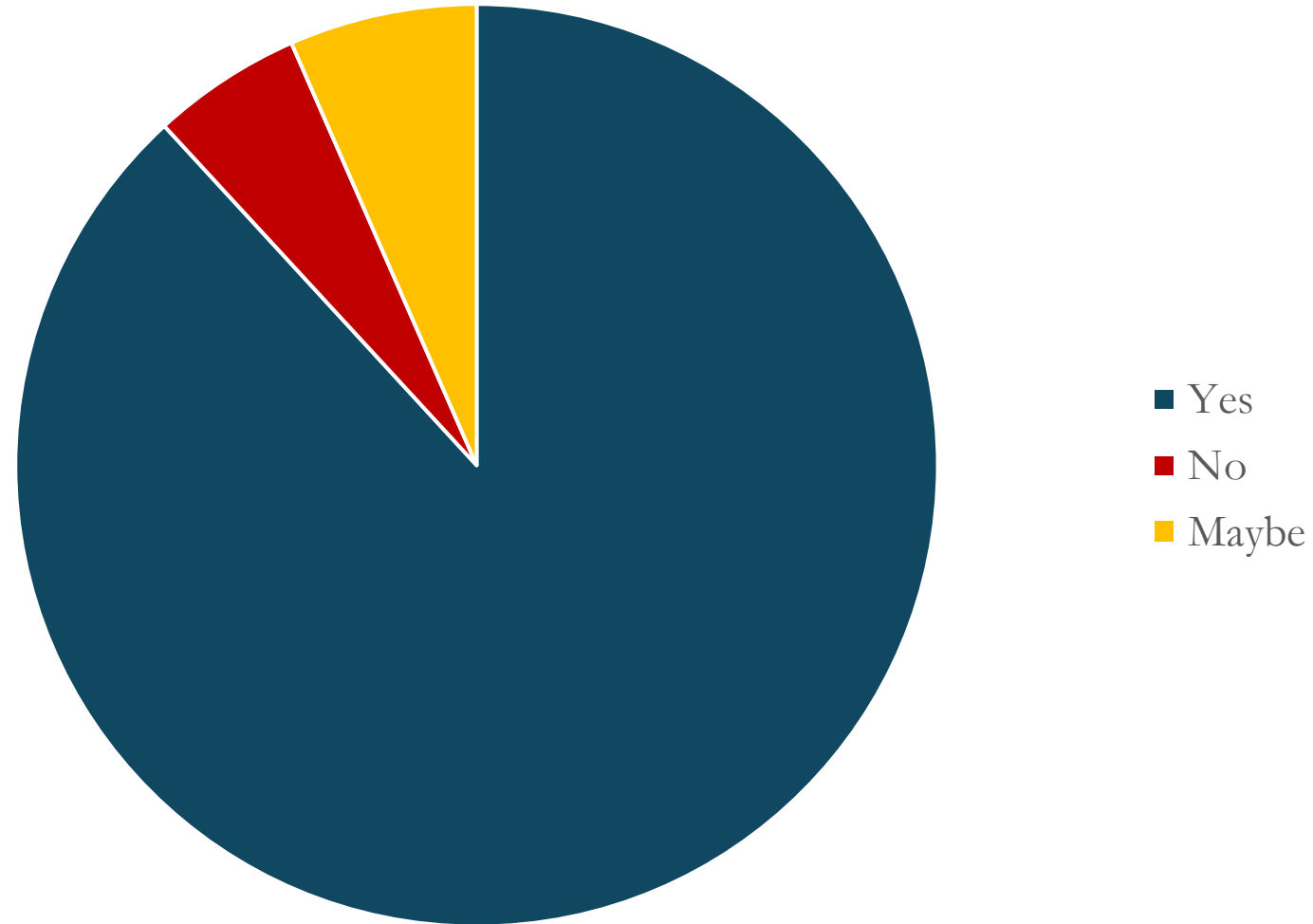


Respondents to the survey

NZHA only	42	
Member of both	34	(76 NZHA members)
PHANZA only	14	(48 PHANZA members)
Total	90	

Are you in favour of the NZHA Exec & PHANZA committee exploring options for closer collaboration between the two associations?



Results only from NZHA members or members of both associations. $n = 76$

How closely should the associations collaborate?

0 = NZHA and PHANZA are distinct associations and should not collaborate

10 = There should be some form of merger between NZHA and PHANZA

Average:	7.9
----------	-----

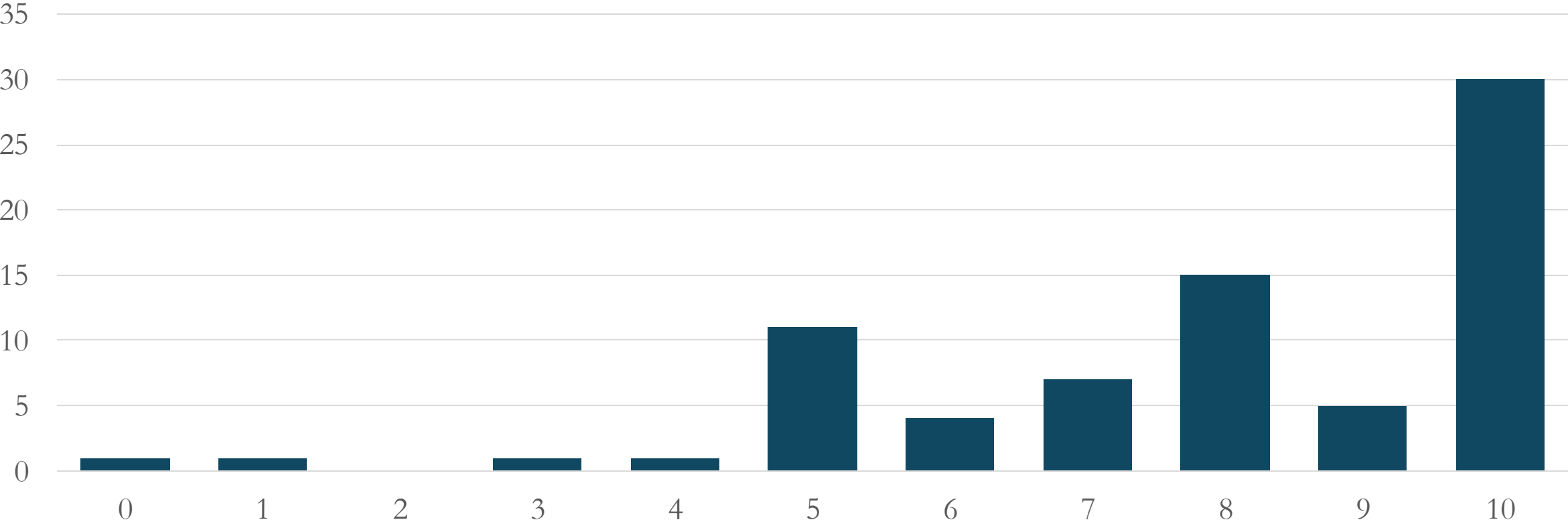
Mode (most common response):	10
------------------------------	----

Lower quartile (1 / 4 of responses were below this number):	7
---	---

Upper quartile (1 / 4 of responses were above this number):	10
---	----

(Members of NZHA and both associations. $n = 76$)

**How closely should the associations collaborate?
(Members of NZHA and both associations. n = 76)**



NZHA and PHANZA are distinct associations and should not collaborate

There should be some form of merger between NZHA and PHANZA

Item 6 at PHANZA 2025 AGM: Collaboration with the NZHA

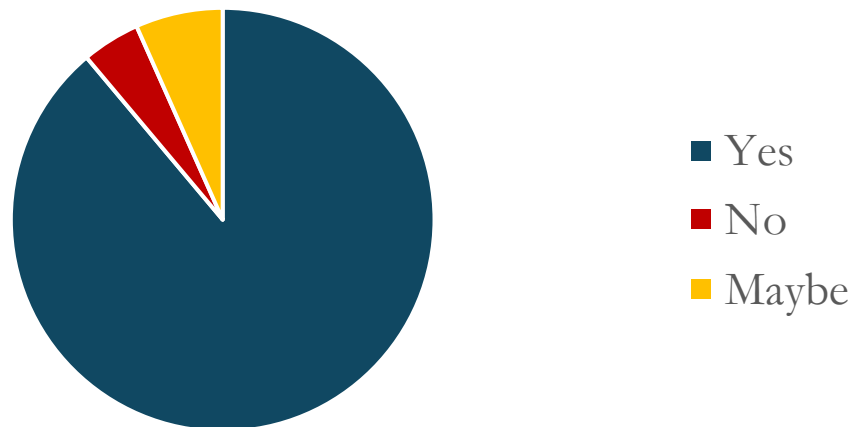
Resolution to explore collaboration with the New Zealand Historical Association

Whereas PHANZA and NZHA share a commitment to enhancing historical understanding in New Zealand;

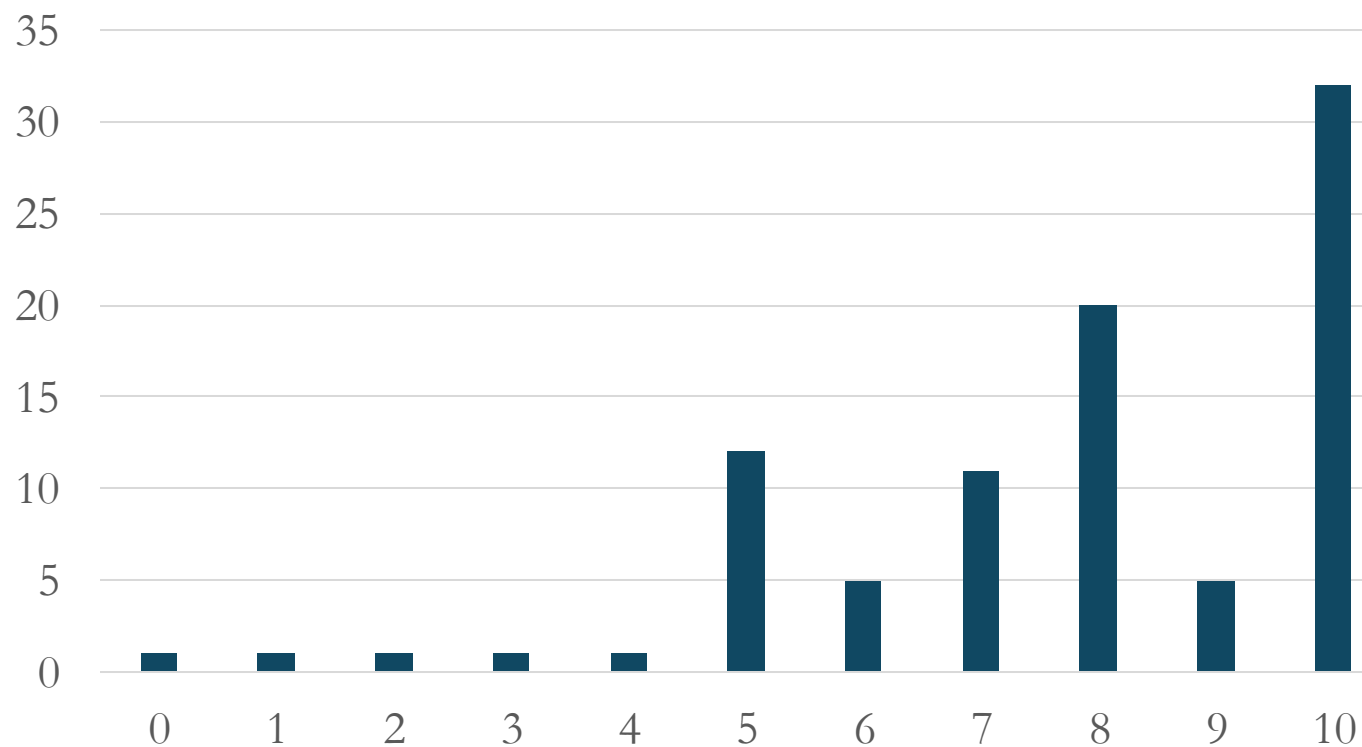
Whereas changes in where and how history is practised has brought the missions of the two societies closer together;

Be it resolved that the 2025-2026 PHANZA committee explore options for closer collaboration between PHANZA and the NZHA.

Are you in favour of the NZHA Exec
& PHANZA committee exploring
options for closer collaboration
between the two associations?



How closely should the associations collaborate?



Average	7.8
Mode	10
LQ	7
UQ	10

Results from all respondents. $n = 90$